

EXISTING 23" DIA. ORNAMENTAL CHERRY TREE

EX. 6' BENCH (TYP.)

IMPORTANT PLANT MATERIAL NOTE REGARDING DEER PRESENCE.
 THE PLANTINGS SELECTED FOR INSTALLATION AS SHOWN HEREON ARE BASED ON WRITTEN SOURCES AND OTHER AVAILABLE DATA REGARDING DEER-RESISTANT PLANTINGS, INCLUDING INPUT FROM NURSERY AND LANDSCAPE PROFESSIONALS, BUTCHER'S COOPERATIVE EXTENSION, AND MASTER GARDENERS IN NORTHERN NJ. NOTING THAT NO PLANT IS DEER-PROOF THE OWNER IS CAUTIONED THAT PLANTS RATED IN THE RARELY DAMAGED, AND SELDOM SEVERELY DAMAGED CATEGORIES WOULD BE BEST FOR LANDSCAPES PRONE TO DEER DAMAGE. PLANTS RATED AS OCCASIONALLY SEVERELY DAMAGED AND FREQUENTLY DAMAGED ARE OFTEN PREFERRED BY DEER AND SHOULD ONLY BE PLANTED WITH ADDITIONAL PROTECTION SUCH AS THE USE OF FENCING, REPELLENTS, ETC. SUCCESS OF ANY OF THESE PLANTS IN THE LANDSCAPE WILL DEPEND ON LOCAL DEER POPULATIONS AND WEATHER CONDITIONS.
 PLANTINGS THAT HAVE BEEN CHOSEN FOR THIS PROJECT PREDOMINANTLY RANGE FROM RARELY DAMAGED TO SELDOM DAMAGED PLANT MATERIAL. AND IT SHOULD BE NOTED THAT IN THE MIDDLE OF WINTER WITH LIMITED FOOD SOURCES, DEER WILL EAT ALMOST ANYTHING. THE USE OF DEER REPELLENTS AND DEER FENCING METHODS MAY ASSIST IN KEEPING THE PROPERTY'S LANDSCAPE ALIVE AND BLOOMING. THE TOWNSHIP OF MIDDLETOWN PUBLIC WORKS DEPARTMENT, VICTOR J. WYMBES, CL.A, LL.A AND THE PORICY PARK NATURE CONSERVANCY MAKE NO GUARANTEE, STATED OR IMPLIED, THAT THE PLANT MATERIAL INDICATED HEREIN SHALL SURVIVE BROWSING OR FEEDING BY DEER.

IT IS RECOMMEND THAT NO SUBSTITUTIONS TO PLANT MATERIAL BE MADE WITHOUT CAREFUL CONSIDERATION. IF SUBSTITUTIONS ARE MADE FOR ANY PLANTINGS IT IS IMPORTANT TO NOTE THAT SUCH SUBSTITUTIONS MAY NOT BE DEER-RESISTANT.

PLANT IRRIGATION

A DRIP-IRRIGATION SYSTEM WAS INSTALLED AND IS BEING UTILIZED FOR BETTER WATERING EFFICIENCY OF THE PLANT MATERIAL.

RAIN BARREL

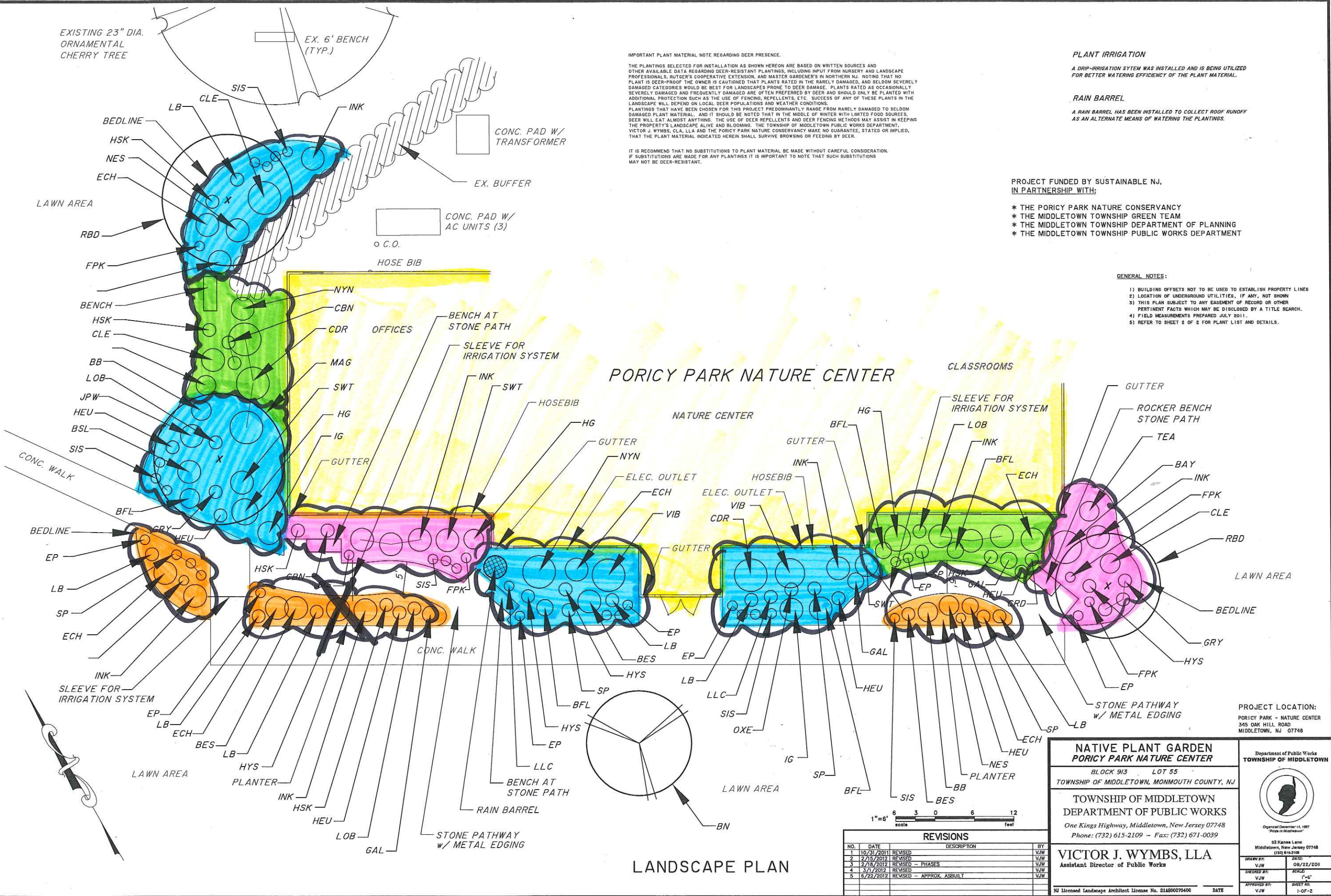
A RAIN BARREL HAS BEEN INSTALLED TO COLLECT ROOF RUNOFF AS AN ALTERNATE MEANS OF WATERING THE PLANTINGS.

PROJECT FUNDED BY SUSTAINABLE NJ, IN PARTNERSHIP WITH:

- * THE PORICY PARK NATURE CONSERVANCY
- * THE MIDDLETOWN TOWNSHIP GREEN TEAM
- * THE MIDDLETOWN TOWNSHIP DEPARTMENT OF PLANNING
- * THE MIDDLETOWN TOWNSHIP PUBLIC WORKS DEPARTMENT

GENERAL NOTES:

- 1) BUILDING OFFSETS NOT TO BE USED TO ESTABLISH PROPERTY LINES
- 2) LOCATION OF UNDERGROUND UTILITIES, IF ANY, NOT SHOWN
- 3) THIS PLAN SUBJECT TO ANY EASEMENT OF RECORD OR OTHER PERTINENT FACTS WHICH MAY BE DISCLOSED BY A TITLE SEARCH.
- 4) FIELD MEASUREMENTS PREPARED JULY 2011.
- 5) REFER TO SHEET 2 OF 2 FOR PLANT LIST AND DETAILS.



PORICY PARK NATURE CENTER

LANDSCAPE PLAN

PROJECT LOCATION:
 PORICY PARK - NATURE CENTER
 345 OAK HILL ROAD
 MIDDLETOWN, NJ 07748

**NATIVE PLANT GARDEN
 PORICY PARK NATURE CENTER**
 BLOCK 913 LOT 55
 TOWNSHIP OF MIDDLETOWN, MONMOUTH COUNTY, NJ

TOWNSHIP OF MIDDLETOWN
 DEPARTMENT OF PUBLIC WORKS
 One Kings Highway, Middletown, New Jersey 07748
 Phone: (732) 615-2109 ~ Fax: (732) 671-0039

Department of Public Works
TOWNSHIP OF MIDDLETOWN

Original December 14, 1987
 "Pride in Maintenance"

52 Kansas Lane
 Middletown, New Jersey 07748
 (732) 615-2109

DRAWN BY: VJW DATE: 08/22/2011
 CHECKED BY: VJW SCALE: 1"=6'
 APPROVED BY: VJW SHEET No: 1-OF-2

NI Licensed Landscape Architect License No. 21AS00070400 DATE

REVISIONS				
NO.	DATE	DESCRIPTION	BY	DATE
1	10/31/2011	REVISED	VJW	
2	2/15/2012	REVISED	VJW	
3	2/15/2012	REVISED - PHASES	VJW	
4	3/1/2012	REVISED	VJW	
5	6/22/2012	REVISED - APPROX. ASBUILT	VJW	

1"=6'
 scale 6 3 0 6 12 feet